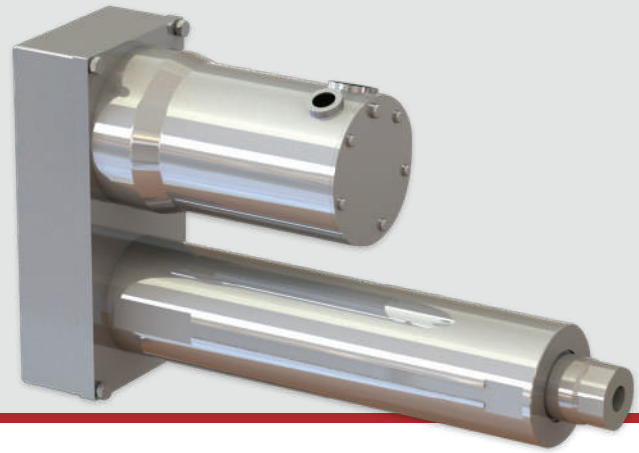


PRODUCT ORDERING GUIDE

Tac Series VS

STAINLESS STEEL



Custom products are available.

Contact sales@edriveactuators.com with your requirements.

BASE NUMBER		OPTIONS				SPECIAL											
V	S																
Base No. (Capacity) VS204 (400 lbf) VS209 (900 lbf) VS305 (500 lbf) VS310 (1,000 lbf) VS320 (2,900 lbf)		Unit Mounting Option MB: Bottom Mount FF: Front Flange MF: Foot Mount TF: Front Trunnion TR: Rear Trunnion CR: Rear Clevis		Motor Position 1, 2, 3, 4 0 = In-Line 		Custom Length (in) 00.00		N.C. Switch Qty 0, 1, 2, 3, etc.		N.O. Switch Qty 0, 1, 2, 3, etc.							
Std. Stroke Length 06: 6 in. 12: 12 in. 18: 18 in. 24: 24 in.		Rod End Option E: Female Eye F: Female Thread A: Self-Aligning Coupler M: Male Thread S: Spherical Rod Eye		Gearbelt Reduction 00: In-Line/Direct Coupled 10: 1:1 20: 2:1													
		Configuration L: In-Line U: Parallel Offset		Switch Type A: Hall Sourcing PNP B: Hall Sinking NPN C: Reed X: No Switches													

For applications support contact us today.

sales@edriveactuators.com

FB6137