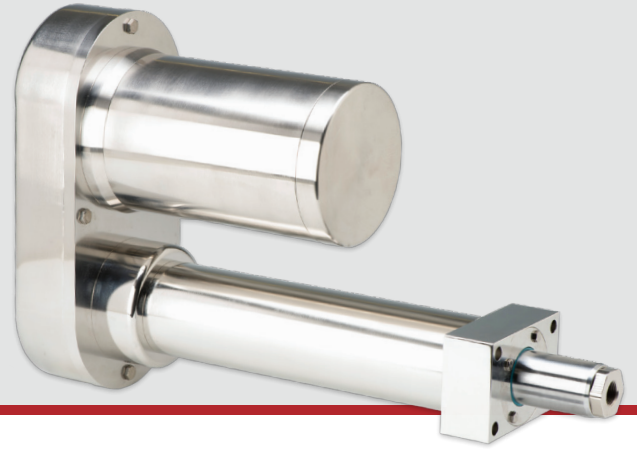


PRODUCT ORDERING GUIDE

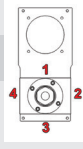
# Eliminator Series ST

STAINLESS STEEL



Custom products are available.

Contact [sales@edriveactuators.com](mailto:sales@edriveactuators.com) with your requirements.

BASE NUMBER	OPTIONS	SPECIAL	
<div style="display: flex; justify-content: space-around;"> <div style="border: 1px solid black; padding: 2px;">S</div> <div style="border: 1px solid black; padding: 2px;">T</div> <div style="border: 1px solid black; width: 20px; height: 20px;"></div> <div style="border: 1px solid black; width: 20px; height: 20px;"></div> <div style="border: 1px solid black; width: 20px; height: 20px;"></div> </div>	<div style="display: flex; justify-content: space-around;"> <div style="border: 1px solid black; width: 20px; height: 20px;"></div> <div style="border: 1px solid black; width: 20px; height: 20px;"></div> <div style="border: 1px solid black; width: 20px; height: 20px;"></div> <div style="border: 1px solid black; width: 20px; height: 20px;"></div> <div style="border: 1px solid black; width: 20px; height: 20px;"></div> <div style="border: 1px solid black; width: 20px; height: 20px;"></div> <div style="border: 1px solid black; width: 20px; height: 20px;"></div> <div style="border: 1px solid black; width: 20px; height: 20px;"></div> </div>	<div style="display: flex; justify-content: space-around;"> <div style="border: 1px solid black; width: 20px; height: 20px;"></div> <div style="border: 1px solid black; width: 20px; height: 20px;"></div> <div style="border: 1px solid black; width: 20px; height: 20px;"></div> <div style="border: 1px solid black; width: 20px; height: 20px;"></div> </div>	
<p><b>Base Parts No. (Capacity)</b></p> <p><b>ST201</b> (850 lbf)</p> <p><b>ST302</b> (2,000 lbf)</p> <p><b>ST304</b> (4,000 lbf)</p> <p><b>ST404</b> (4,000 lbf)</p> <p><b>ST406</b> (6,000 lbf)</p> <p><b>ST508</b> (8,000 lbf)</p> <p><b>ST516</b> (16,000 lbf)</p> <p><b>ST618</b> (18,000 lbf)</p> <p><b>ST625</b> (25,000 lbf)</p> <p><b>Std. Stroke Lengths*</b></p> <p><b>06:</b> 6 in.</p> <p><b>12:</b> 12 in.</p> <p><b>18:</b> 18 in.</p> <p><b>24:</b> 24 in.</p> <p><b>30:</b> 30 in.</p> <p><b>36:</b> 36 in.</p> <p><b>42:</b> 42 in.</p> <p><b>48:</b> 48 in.</p>	<p><b>Unit Mounting Option</b></p> <p><b>MB:</b> Bottom Mount</p> <p><b>FF:</b> Front Flange</p> <p><b>MF:</b> Foot Mount</p> <p><b>TF:</b> Front Trunnion</p> <p><b>TR:</b> Rear Trunnion</p> <p><b>End Effector/Rod End</b></p> <p><b>E:</b> Female Eye</p> <p><b>F:</b> Female Thread</p> <p><b>A:</b> Self-Aligning Coupler**</p> <p><b>M:</b> Male Thread</p> <p><b>S:</b> Spherical Rod Eye</p> <p><b>Configuration</b></p> <p><b>L:</b> In-Line</p> <p><b>U:</b> Parallel Offset</p>	<p><b>Motor Position</b></p> <p>1, 2, 3, 4</p> <p>0 = In-Line</p>  <p><b>Gearbelt Reduction</b></p> <p><b>00:</b> In-Line/Direct Coupled</p> <p><b>10:</b> 1:1</p> <p><b>20:</b> 2:1</p> <p><b>Switch Type</b></p> <p><b>A:</b> Hall Sourcing PNP</p> <p><b>B:</b> Hall Sinking NPN</p> <p><b>C:</b> Reed</p>	<p><b>Custom Length (in)</b></p> <p>00.00</p> <p><b>N.C. Switch Qty</b></p> <p>0, 1, 2, 3, etc.</p> <p><b>N.O. Switch Qty</b></p> <p>0, 1, 2, 3, etc.</p>

\* ST201 is available with stroke lengths up to 12 in.  
 ST302 – ST304 are available with stroke lengths up to 36 in.  
 ST404 – ST406 are available with stroke lengths up to 42 in.  
 ST508 – ST625 are available with stroke lengths up to 48 in.  
 \*\* Self-Aligning Coupler is not available for ST625