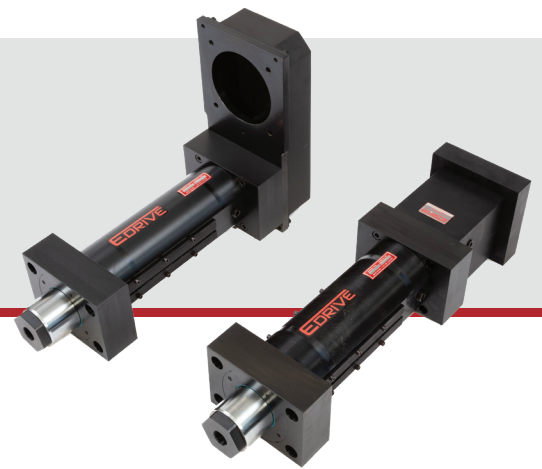
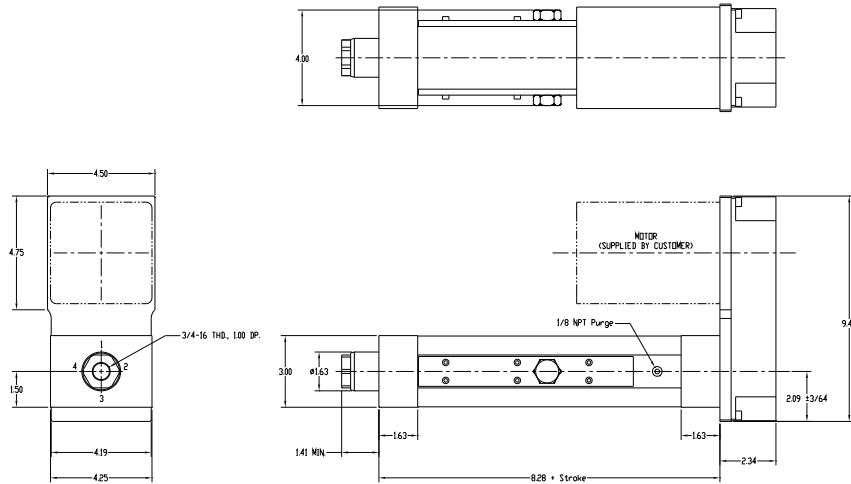


Eliminator HD302 Actuator
Without Switch Tracks for Mounting Limit Switches
English Dimensions

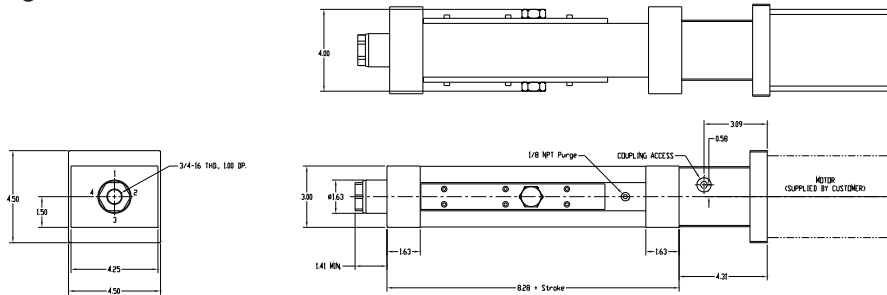


Motor Mount Configurations (*choose one*)

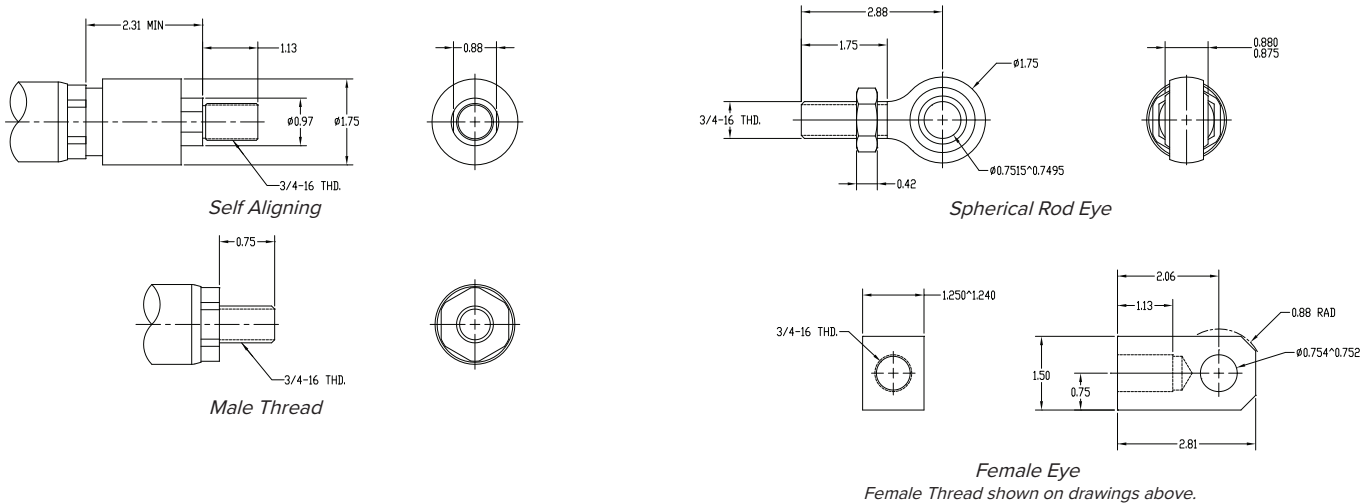
HD302 Parallel Offset Motor Configuration



HD302 Inline Motor Configuration



HD302 Rod End Conditions (*choose one*)

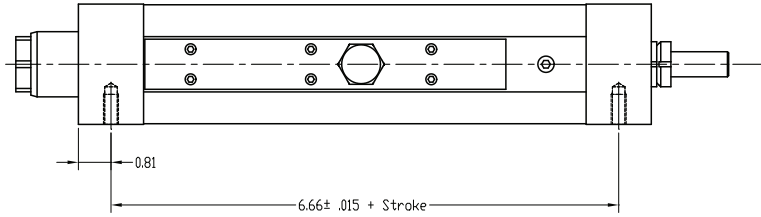
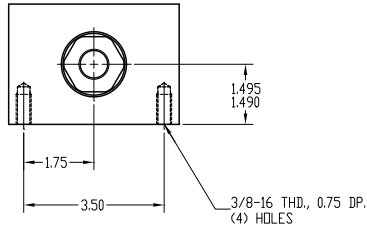


Eliminator HD302 Actuator
Without Switch Tracks for Mounting Limit Switches
English Dimensions

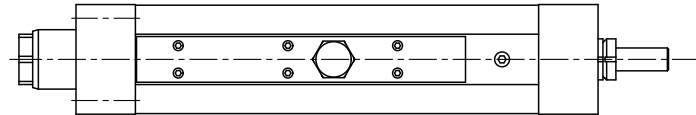
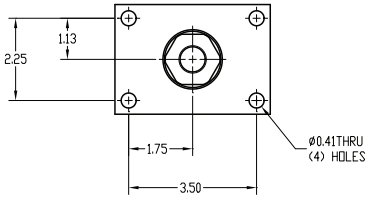


HD302 Actuator Mount Configurations (*choose one*)

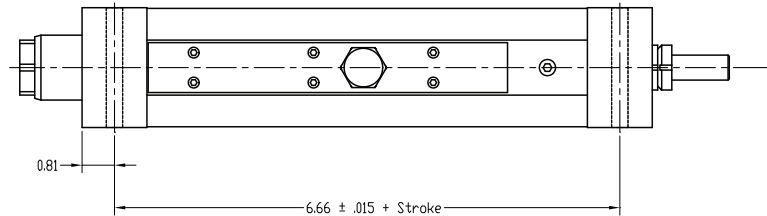
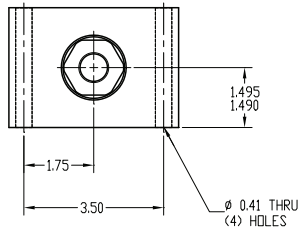
HD302 Bottom Mount Dimensions



HD302 Front Flange Mount Dimensions



HD302 Foot Mount Dimensions



HD302 Trunnion Front Mount or Rear Mount Dimensions

