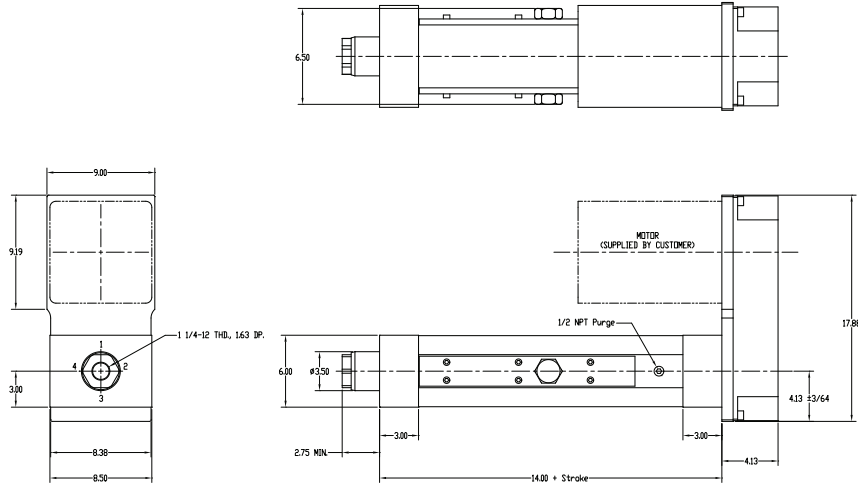


Eliminator HD618 Actuator
Without Switch Tracks for Mounting Limit Switches
English Dimensions

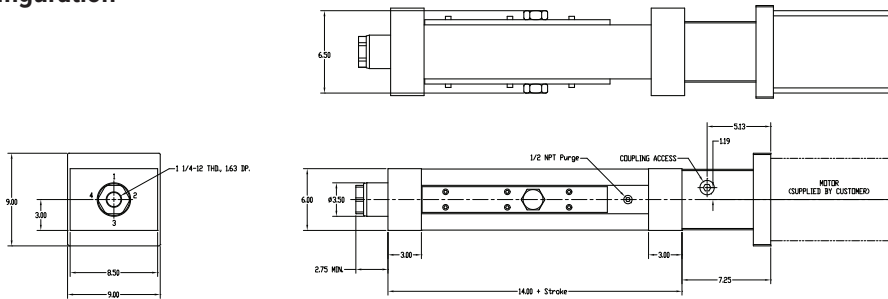


Motor Mount Configurations (choose one)

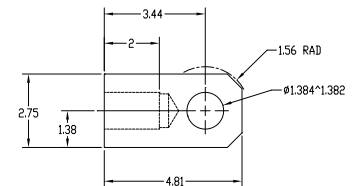
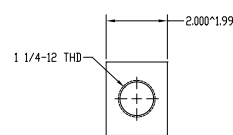
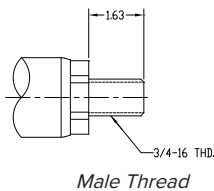
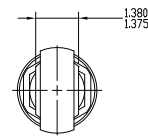
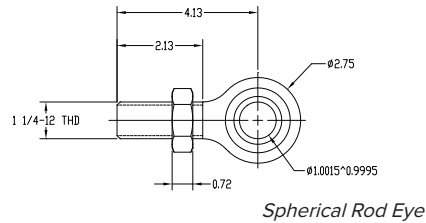
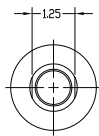
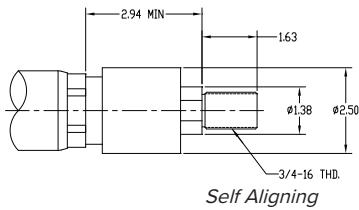
HD618 Parallel Offset Motor Configuration



HD618 Inline Motor Configuration

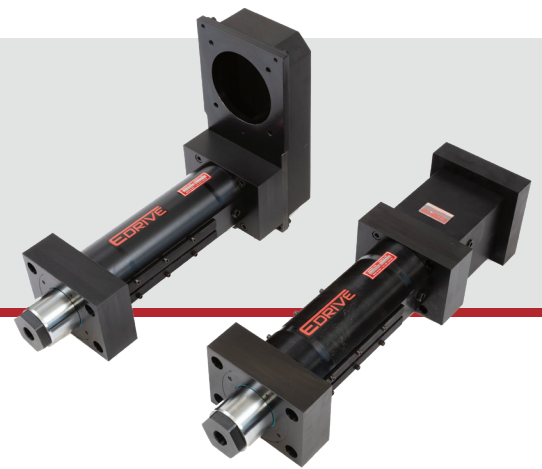


HD618 Rod End Conditions (choose one)



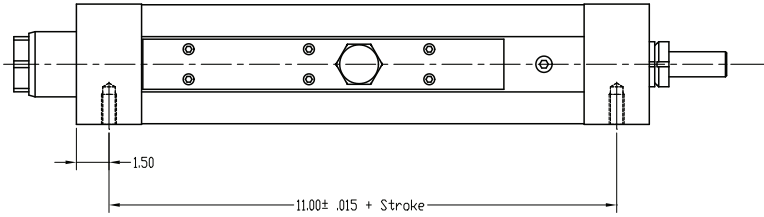
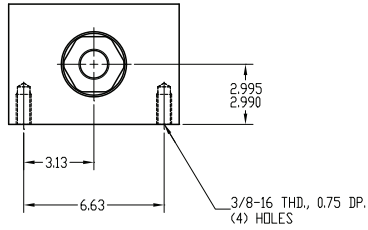
Female Thread shown on drawings above.

Eliminator HD618 Actuator
Without Switch Tracks for Mounting Limit Switches
English Dimensions

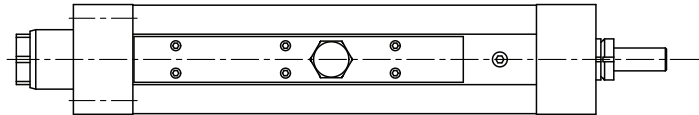
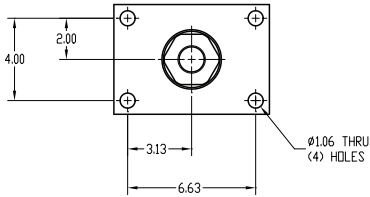


HD618 Actuator Mount Configurations (*choose one*)

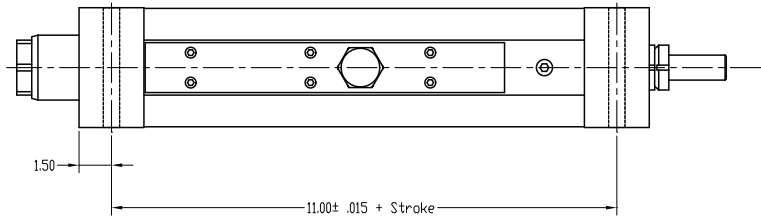
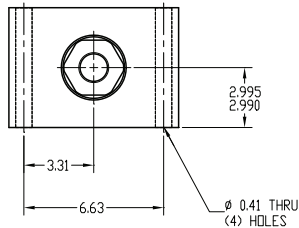
HD618 Bottom Mount Dimensions



HD618 Front Flange Mount Dimensions



HD618 Foot Mount Dimensions



HD618 Trunnion Front Mount or Rear Mount Dimensions

